

TORQUE ARM INSTALLATION

READ ALL INSTRUCTIONS BEFORE PROCEEDING WITH INSTALLATION

- 1) MOUNT THE TETHER BRACKET TO THE FRONT OF THE ENCODER IN THE POSITION DESIRED, USING THE #8-32 SCREWS AND LOCKWASHERS SUPPLIED.
FOR INSTALLATIONS REQUIRING AN ACCESSORY GUARD, SEE STEP 9
- 2) DETERMINE LOCATION OF THE TORQUE ARM STATIONARY MOUNTING POINT.
- 3) THE TORQUE ARM IS FULLY THREADED AND MAY BE CUT TO LENGTH.
- 4) ATTACH THE TORQUE ARM TO THE TETHER BRACKET AS SHOWN IN FIG 1.
- 5) ENSURE THAT THE SHAFT IS CLEAN AND FREE OF BURRS. LOOSEN THE ENCODER SHAFT COLLAR. FOR HS35A, APPLY THREADLOCKER TO CLAMPING COLLAR SCREW. **DO NOT APPLY THREADLOCKER TO HS35M.**
SLIDE THE ENCODER ONTO THE SHAFT WITH THE TETHER BRACKET AND TORQUE ARM FACING MOTOR.
- 6) AXIALLY POSITION THE ENCODER ON THE SHAFT SO THAT THE TORQUE ARM IS AS CLOSE TO THE MOTOR AS PRACTICAL AND PERPENDICULAR TO THE MOTOR SHAFT AXIS OF ROTATION (AS VIEWED FROM TOP).
DO NOT ALLOW THE ATTACHING HARDWARE OR ROD END BEARINGS TO COME IN CONTACT WITH THE MOTOR HOUSING.
SHAFT ENGAGEMENT MUST MEET THE MINIMUM REQUIREMENTS ESTABLISHED IN THE ENCODER INSTALLATION INSTRUCTIONS.

- 7) POSITION THE ENCODER ON THE MOTOR SHAFT SO THAT THE TORQUE ARM PRODUCES APPROX A 90° ANGLE TO A LINE ESTABLISHED BETWEEN THE SHAFT CENTERLINE AND THE ROD ASSEMBLY MOUNTING BOLT ON THE TETHER BRACKET (VIEWED FROM END).
- 8) ATTACH THE FREE END OF THE ROD ASSEMBLY TO THE STATIONARY POINT USING THE 5/16-24 HARDWARE SUPPLIED. CHECK TO ENSURE THAT THE TETHER BRACKET IS IN A "NO STRESS" CONDITION, THEN FIRMLY TIGHTEN CLAMP COLLAR SCREW TO 35-40 LB-IN USING A T-HANDLE HEX WRENCH. **DO NOT USE RIGHT ANGLE HEX WRENCH.**
- 9) FOR INSTALLATIONS REQUIRING A PROTECTIVE BASKET GUARD:
 - a) TETHER BRACKET AND OUTPUT TERMINATION MUST BE POSITIONED AS SHOWN IN FIG 2.
 - b) INSTALL GUARD BEFORE ATTACHING FREE END OF ROD ASSEMBLY. REFER TO BASKET GUARD INSTALLATION INSTRUCTIONS.
 - c) DEPENDING ON MOTOR CONFIGURATION AND DISTANCE AT WHICH ENCODER IS INSTALLED, SPACER WASHERS MAY BE REQUIRED TO PERMIT GUARD TO MOUNT PROPERLY.

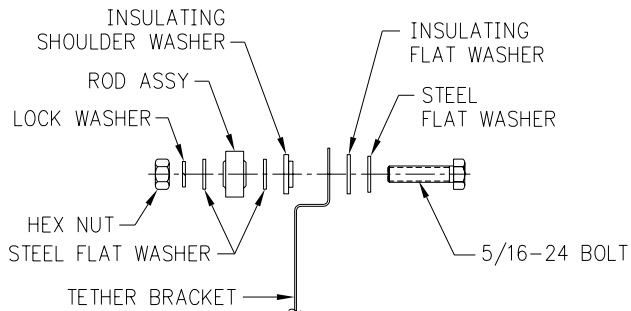


FIGURE 1

FOR MAXIMUM STABILITY AND OPERATING CONDITIONS, MOUNT THE ENCODER WITH THE TORQUE ARM AS CLOSE AS POSSIBLE TO THE MOTOR HOUSING

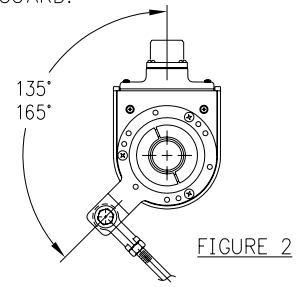
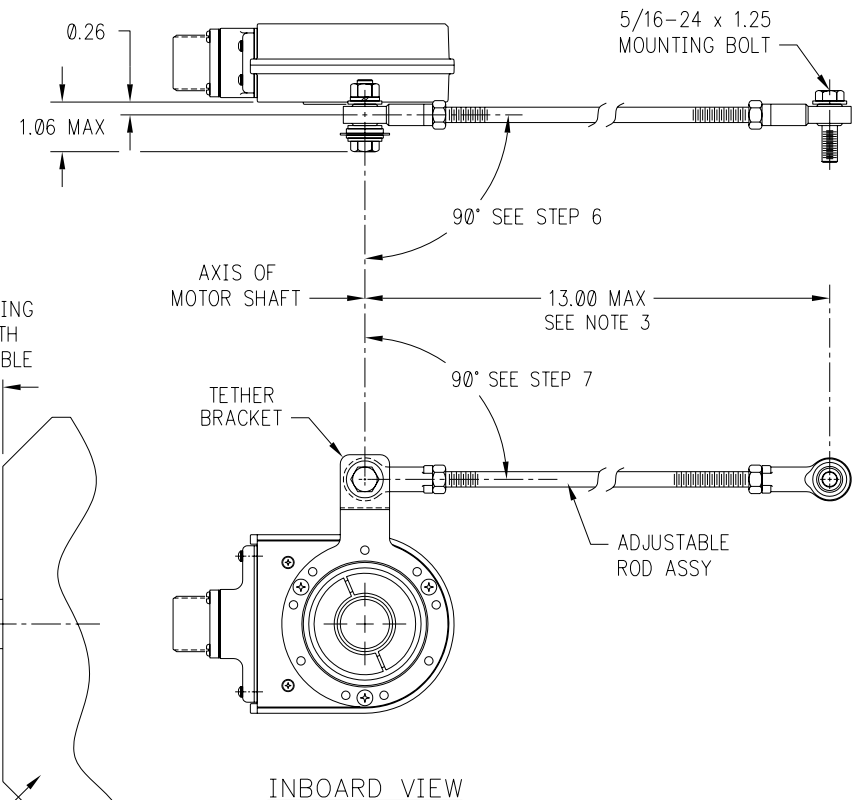
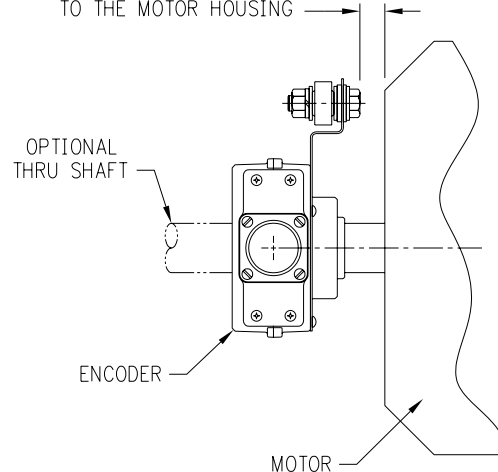


FIGURE 2