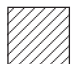


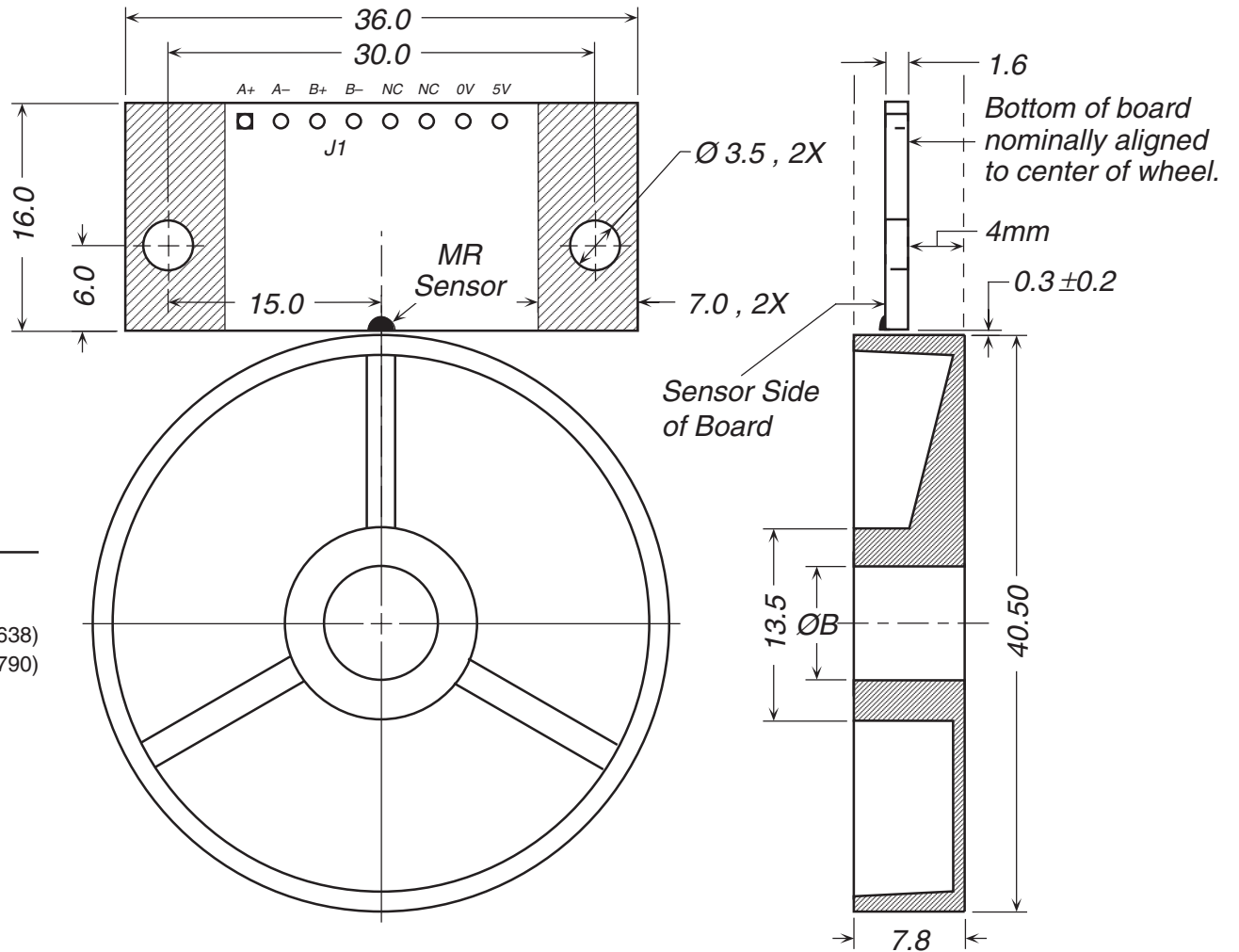
### Wheel ID Table (ØB)

KXS1241-xxxx-	Nominal ID (mm)	ID Tolerance ISO	ID Tolerance ±mm
06	6.00	H7	+0.01, -0.00
08	8.00	H7	+0.01, -0.00
10	10.00	H7	+0.01, -0.00
25	6.35	—	-0.01, -0.03
31	7.94	—	-0.02, -0.03
38	9.53	—	-0.02, -0.03

### Wheel Reference Specifications

Mass	8	grams
Inertia	9	gram cm <sup>2</sup>
Tensile Strength	480	kg/cm <sup>2</sup> (ASTM D-638)
Flexural Strength	840	kg/cm <sup>2</sup> (ASTM D-790)
Rockwell Hardness	R110	ASTM D-785

 **Sensor mounting area.**  
Free of components and traces (both sides).



REFERENCE	MATERIAL		admotec	
	As shown.		ADMOTEC INC., LEBANON NEW HAMPSHIRE USA	
<b>REVISIONS</b>	HEAT TREAT		<b>KXS1241 Encoder Outline &amp; Mounting</b>	
	Not applicable.			
	FINISH		7310-414	
	Not applicable.		REVISION	
	DRAWN D Robinson		—	
	DATE 4 May 07		SCALE 2:1	
	CHECKED		SHEET 1 OF 1	
	DATE			
	APPROVED			
	DATE			
DIMENSIONS IN MILLIMETERS TOLERANCES UNLESS OTHERWISE SPECIFIED  .X: ± 0.10 .XX: ± 0.05 ANGLES: ± 0°30'		THIS DRAWING IS THE PROPERTY OF ADMOTEC INC. IT MAY NOT BE COPIED, USED OR DISCLOSED FOR ANY PURPOSE WITHOUT WRITTEN PERMISSION BY ADMOTEC INC.		